



# Rimboe

Stukje slagwerk voor beginnende jeugdslagwerkers  
om samenspel te oefenen en te spelen op een concert

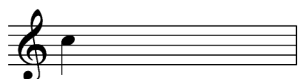
Moeilijkheidsgraad \* (makkelijk)

Bezetting : Snaredrum  
Congas  
Djembé 1  
Djembé 2  
Toms (4)

---

## Ritmische Bouwsteentjes waaruit dit werk is opgebouwd

---



Duration Appr. 02'10"

$\text{♩} = 80$

Snaredrum

Congas

Djembe 1

Djembe 2

Toms (4)

A

7

Sdr.

C. Dr.

Djb. 1

Djb. 2

Tms.

**B** **C**

Sdr. *f*

C. Dr. *f* *mf*

Djb. 1 *mf* *mf*

Djb. 2 *mf* *mf*

Tms. *mf* *mf*

<sup>19</sup>

Sdr.

C. Dr.

Djb. 1

Djb. 2

Tms.

**D**

X = Stick on Stick

Musical score for section D, measures 28-32. The score is for five parts: Sdr. (Snare Drum), C. Dr. (Cymbal), Dj. 1 (Drum 1), Dj. 2 (Drum 2), and Tms. (Tom-toms). The Sdr. part starts with a dynamic of *f* and changes to *ff* at measure 30. The other parts (C. Dr., Dj. 1, Dj. 2, Tms.) all start with a dynamic of *f*. The Sdr. part has a 'Stick on Stick' (X) in measure 31. The C. Dr., Dj. 1, and Dj. 2 parts have accents (^) over many notes. The Tms. part has accents (^) over many notes. The score is in 2/4 time.

**E**

Accelerando .....

Musical score for section E, measures 31-35. The score is for five parts: Sdr. (Snare Drum), C. Dr. (Cymbal), Dj. 1 (Drum 1), Dj. 2 (Drum 2), and Tms. (Tom-toms). The Sdr. part starts at measure 31 with a dynamic of *f* and has an 'X' (Stick on Stick) in measure 32. The other parts (C. Dr., Dj. 1, Dj. 2, Tms.) all start with a dynamic of *f*. The Sdr. part has accents (^) over many notes. The C. Dr., Dj. 1, and Dj. 2 parts have accents (^) over many notes. The Tms. part has accents (^) over many notes. The score is in 2/4 time and includes an 'Accelerando .....' marking.

**F**

♩ = 110

37 .....

Sdr.

C. D.

Djb

Djb

Tms



43

Sdr.

C. Dr.

Djb. 1

Djb. 2

Tms.



**G** **H** *Rallentando* .....

Sdr. *f*

C. Dr. *f*

Djb. 1 *f*

Djb. 2 *f*

Tms. *f*

55 .....  $\text{♩} = 60$  *A Tempo*  $\text{♩} = 110$  *Fine*

Sdr. *ff*

C. Dr. *ff*

Djb. 1 *ff*

Djb. 2 *ff*

Tms. *ff*