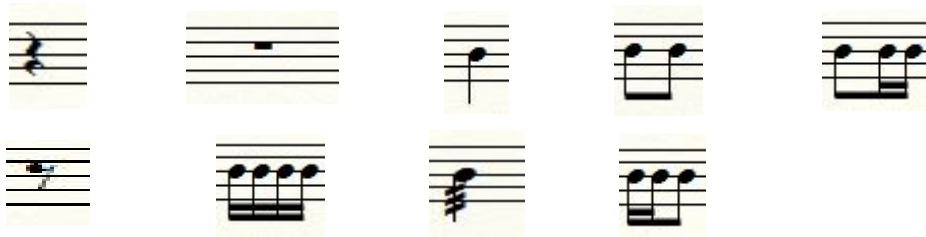


"Second March"

Deze mars voor iets gevorderde beginnersgroep

Opgebouwd uit volgende noten en rusten



Accenten : Ad libitum

**Werk samen naar de toekomst toe
daar hoort samenspelen ook bij.**

Duration Appr.01'36"

A

Tempo di Marchia

Musical notation for section A, measures 1-4. The score is for Snaredrum, Tenordrum, and Bassdrum. The time signature is 2/4. The tempo is marked 'Tempo di Marchia'. The dynamics are marked 'f' (forte) for all three parts. The Snaredrum part features a rhythmic pattern of eighth notes and quarter notes. The Tenordrum part has a similar pattern with some rests. The Bassdrum part has a simple pattern of quarter notes.

B

Musical notation for section B, measures 5-8. The score is for Snaredrum, Tenordrum, and Bassdrum. The time signature is 2/4. The dynamics are marked 'p' (piano) for all three parts. The Snaredrum part has a pattern of eighth notes. The Tenordrum part has a pattern of eighth notes with some rests. The Bassdrum part has a pattern of quarter notes with some rests.

C

Musical notation for section C, measures 9-12. The score is for Snaredrum, Tenordrum, and Bassdrum. The time signature is 2/4. The dynamics are marked 'ff' (fortissimo) for Snaredrum, 'mf' (mezzo-forte) for Snaredrum, 'f' (forte) for Tenordrum, and 'mp' (mezzo-piano) for Tenordrum. The Snaredrum part has a pattern of eighth notes. The Tenordrum part has a pattern of quarter notes with some rests. The Bassdrum part has a pattern of quarter notes with some rests.

DRUMSOLUTIONS

D

Musical score for section D, featuring three staves. The top staff (snare drum) begins with a rest, followed by a series of eighth notes starting in the third measure, marked *mf*. The middle staff (tom-tom) plays a steady eighth-note pattern, marked *mf*. The bottom staff (bass drum) plays a steady eighth-note pattern, marked *mf*.

E

Musical score for section E, featuring three staves. The top staff (snare drum) plays eighth notes with accents, marked *f*. The middle staff (tom-tom) plays eighth notes with accents, marked *f*. The bottom staff (bass drum) plays eighth notes with accents, marked *f*.

F

Musical score for section F, featuring three staves. The top staff (snare drum) plays eighth notes with accents, marked *f*. The middle staff (tom-tom) plays eighth notes with accents, marked *f*. The bottom staff (bass drum) plays eighth notes with accents, marked *f*.

DRUMSOLUTIONS